



OFFERS IN THE REGION OF

£575,000

Bellenden Road

London, SE15 4QY

**GARETH
JAMES**

PROPERTY SUMMARY

Located on the ever-popular Bellenden Road, this attractive three-bedroom split-level apartment forms part of a charming period conversion. The property benefits from its own private entrance and is offered with a share of the freehold.

3



1



1

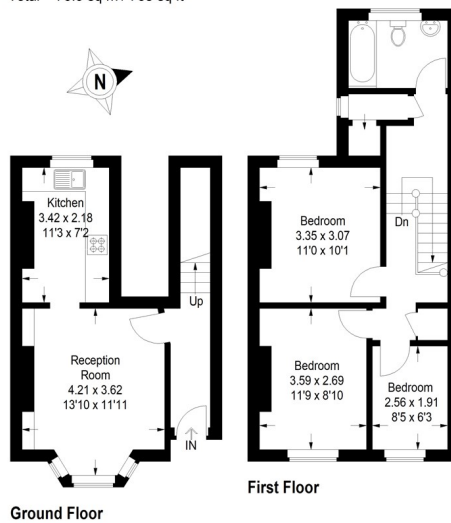






Bellenden Road, SE15

Approximate Gross Internal Area
 Ground Floor = 27.9 sq m / 300 sq ft
 First Floor = 43.0 sq m / 463 sq ft
 Total = 70.9 sq m / 763 sq ft



This plan is for layout guidance only. Not drawn to scale unless stated. Windows and door openings are approximate. Whilst every care is taken in the preparation of this plan, please check all dimensions, shapes and compass bearings before making any decisions reliant upon them. (D:558393)

3
1
1

Energy Efficiency Rating		
	Current	Potential
Very energy efficient - lower running costs		
(92 plus) A		
(81-91) B		
(69-80) C		
(55-68) D	64	64
(39-54) E		
(21-38) F		
(1-20) G		
Not energy efficient - higher running costs		
England & Wales	EU Directive 2002/91/EC	

Agents Note: Whilst every care has been taken to prepare these particulars, they are for guidance purposes only. All measurements are approximate and are for general guidance purposes only and whilst every care has been taken to ensure their accuracy, they should not be relied upon and potential buyers/tenants are advised to recheck the measurements

GARETH JAMES	OFFICE ADDRESS 129 Bellenden Road London SE15 4QY	OFFICE DETAILS 02077324330 sales@garethjames.com https://www.garethjames.com/
---------------------	---	--